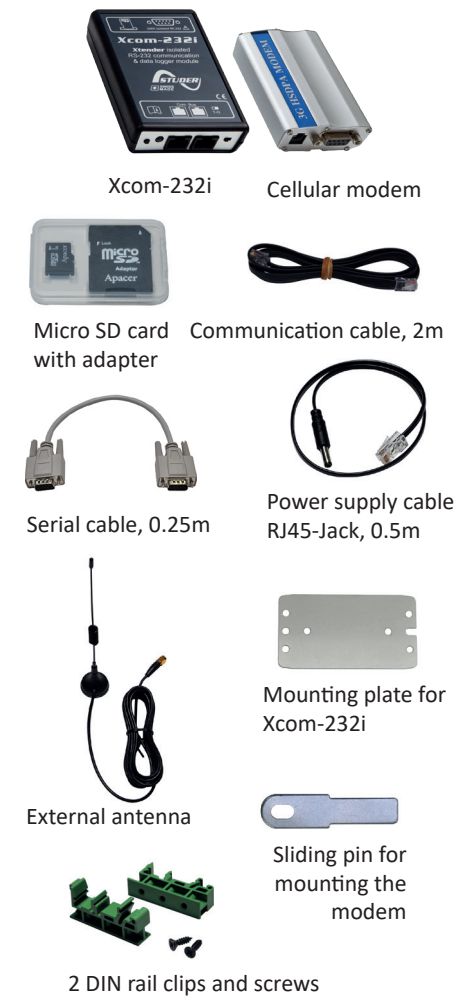


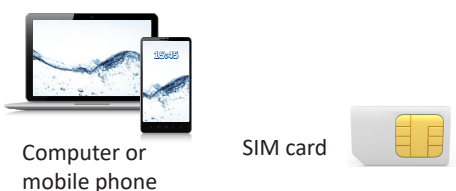


# How to configure and to install the Xcom-GSM

## 1. Contents of the Xcom-GSM remote communication set



## 2. Additional items needed



### Network requirements

- Sufficient GSM network coverage on the site of the Xtender system
- Network standard: GSM / GPRS / EDGE / UMTS / HSDPA / HSUPA / HSPA
- Frequencies: 850 / 900 / 1800 / 1900 / 2100 MHz.

### Data traffic

- At least 2MB data per month
- Up to 2MB per day if the datalogger function is activated. (see table in the FAQ section for further information.)

## 3. Mount the different products within the Studer system

The products should be mounted on a smooth surface.

The distance between the Xcom-232i and the Studer system should **not exceed 10 metres**.

The distance between the Xcom-232i and the GSM modem is maximum 0.25m.

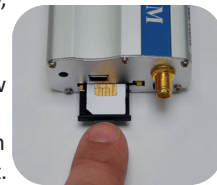
All cables you need are provided in the set.

### ATTENTION!

The metallic casing of the 3G cellular modem is connected to the negative battery pole. Therefore it is necessary to **isolate its casing** from any metallic surface.

## 4. Enter SIM card into the modem

Eject the SIM card tray, situated close to the antenna connector, by pushing the yellow button next to it. Place the SIM card on the tray and reinsert it.

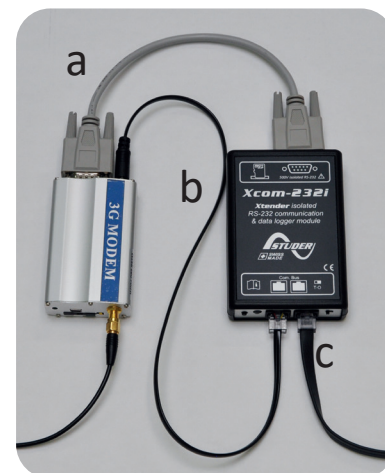
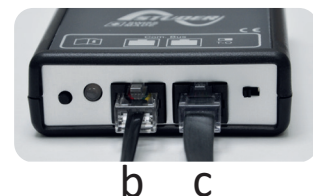


## 5. Connect the antenna to the modem



## 6. Wiring

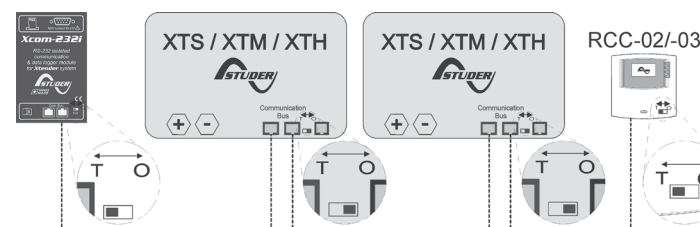
- Connect the serial cable between the modem and the Xcom-232i
- Connect the power supply cable between the modem and the Xcom-232i
- Connect the communication cable between the Xcom-232i and the installation



## 7. Set the terminations

It is very important to set the terminations correctly for the functioning of the system. With one device in the system the termination on the Studer device should be put to T as in "Terminated". With more than one device in the system all Studer devices should be put to O as in "Open" apart from the devices at the end of the communication chain. These devices should be put to T as in "Terminated".

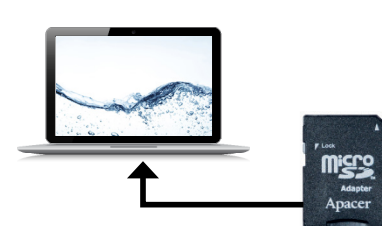
The termination switch next to the two RJ 45 connectors on the Xcom-232i must be set in position T.



## 8. Turn on the power

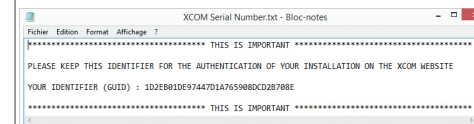


## 9. Insert the Micro SD card into the computer



## 11. Take note of your GUID file

Close the message box and a text file with your identifier (GUID) will appear. This file is saved on your "Desktop" or in "My documents". The unique identifier (GUID) is required to link your installation with your account on the Xcom portal. Keep it safe.

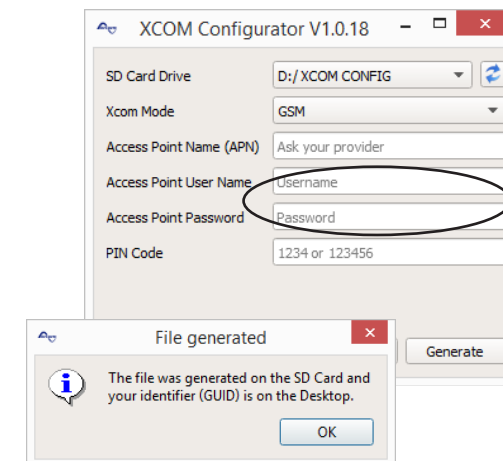


## 13. Xcom connects to the server

After the parameters are set and applied, the Xcom-GSM will automatically connect to the server and send a confirmation message to the RCC. If there is no message, the Xcom is not connected to the server. Use the FAQ at the opposite side of this Quick guide to see what could have gone wrong.



## 10. Run the Xcom-configurator



Choose GSM mode.  
Ask the Internet Service Provider.  
Required for some Internet Service Providers, leave blank if not.  
Enter the SIM card PIN code. Leave it blank if no code.

Generate the configuration file.

Choose "GSM" as Xcom mode. Then fill in the required fields. Press "Generate" to save the parameter settings. A window will automatically confirm the successful file generation.

## 12. Insert the Micro SD card into the Xcom-232i

Remove the SD card from the computer and insert it into the Xcom-232i. The setup process will start automatically and normally takes 1 second.

When the LED stops blinking red, the setup is finished.

### ATTENTION!

The Xcom-232i needs to be powered during the setup process. Otherwise, the configuration will not be taken into account.



## The Xcom-GSM is successfully installed!

Register the installation at: <https://xcom.studer-innotec.com> in order to control it remotely with the Xcom-GSM.

